

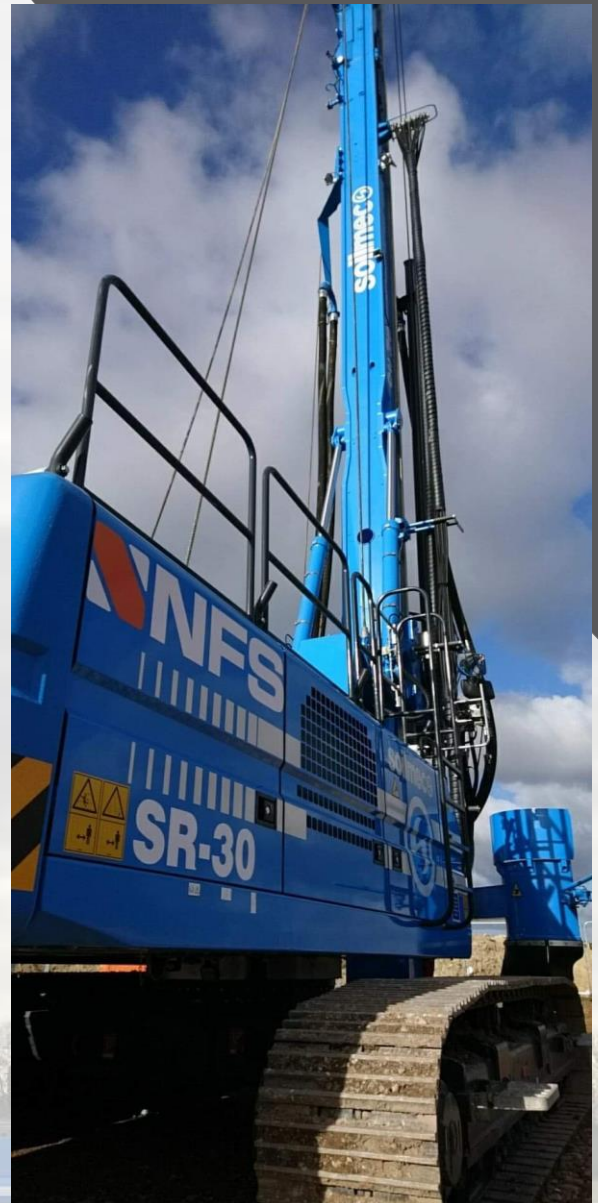


# Soilmec SR30

# Soilmec SR30

## Some of the Soilmec SR-30's features include:

- High productivity.
- Easy to transport, can be transported with rotary table and Kelly bar installed.
- Short rig up time, about 20 minutes from arrival on job site.
- Easy to use and handle.
- Parallelogram system: allows various working radius and always maintaining the mast in vertical position. Complete with electronic device for automatic stop.
- Self-erecting mast: can withstand the max torque over the whole length.



### Continuous Flight Auger (CFA)

• Max pile diameter	750 mm
• Max pile depth <sup>1</sup>	23 m
• Max extraction force	380 kN
• Max torque	121 kNm
• Operating weight <sup>2</sup>	36 ton

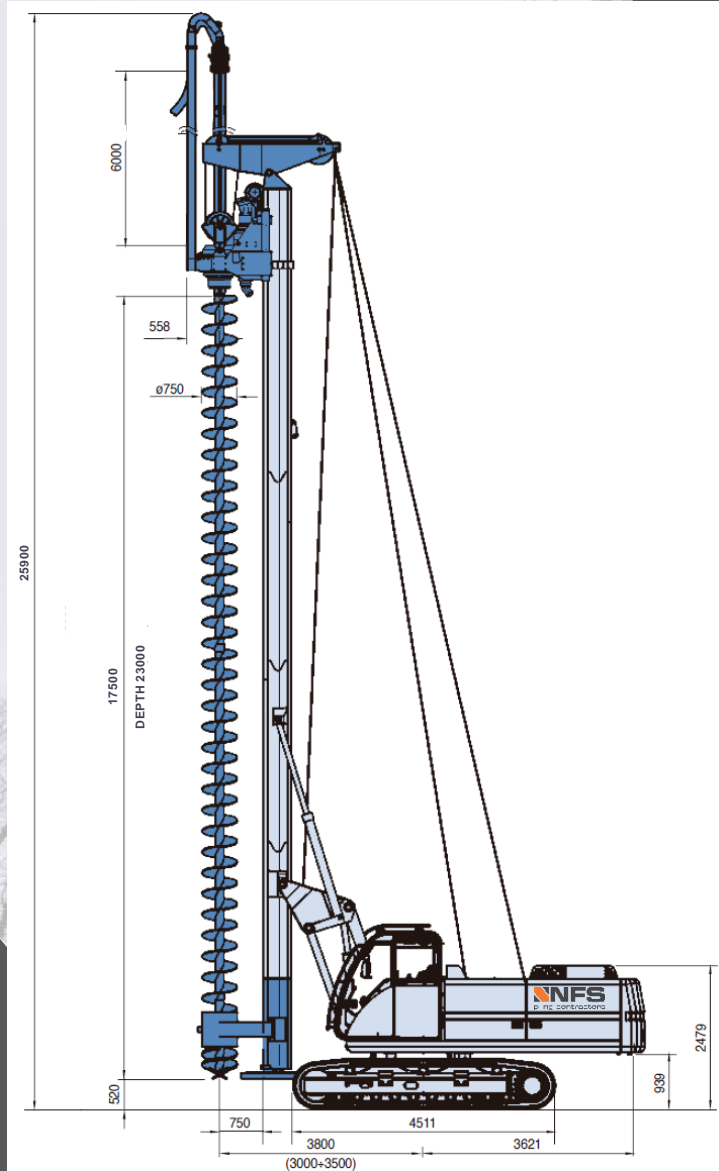
<sup>1</sup>Pile depth depends on sleeve length

<sup>2</sup>Weight is based on final configuration

# Soilmec SR30

## CFA – Continuous Flight Auger

### Working Condition



### Transport Conditions LLP

