

Soilmec SR-20



Soilmec rotaries are designed and manufactured to meet the need for increased production and performance on various applications, with the added benefit of increased component life and reliability.

Some of its features include:

- Can be transported complete with kelly bar.
- No special road permits required.
- High performance, availability and reliability by using tried-and-tested technology with high power-to-volume-ratio.
- Low noise emissions, smooth running characteristics and durability.

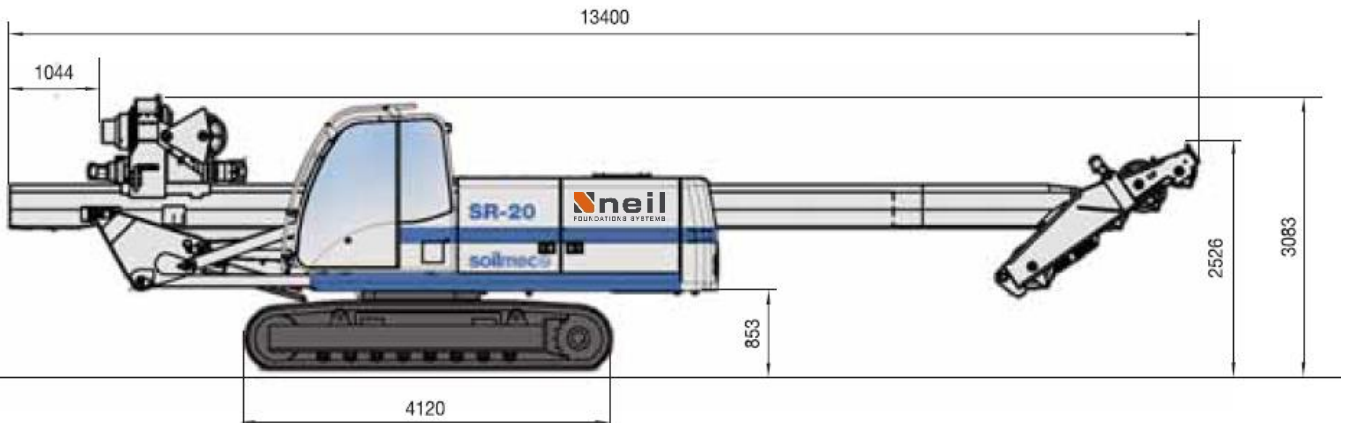


Undercarriage (retractable crawler frames)

Overall width of crawlers retracted	2500 mm
Overall width of crawlers extended	3400 mm
Overall length of crawlers	4120 mm

Transport CFA version

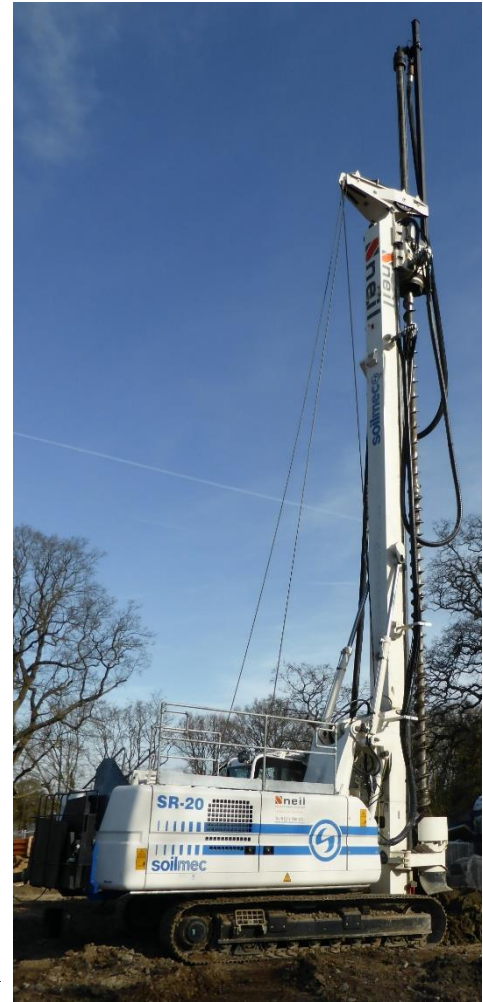
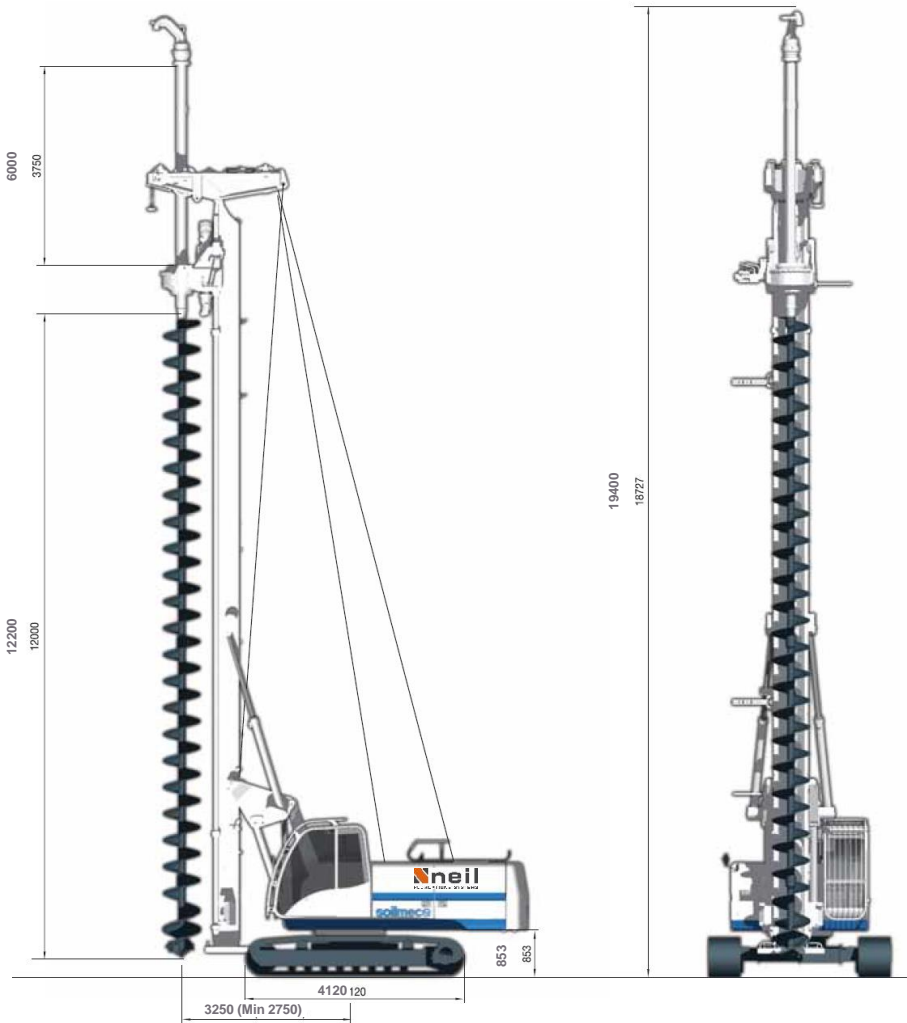
Weight 27000 kg



Soilmec SR-20



CFA – Continuous Flight Auger



Auger extension	6,00 m
Drilling depth with auger cleaner	18,00 m
Drilling depth without auger cleaner	18,00 m
Max drilling diameter	750 mm
Max auger weigh	3200 kg
Max extraction force	280 kN
Cont. flight auger length including starter auger	12000 mm
Operating weight (approx. w/o augers)	27000 kg



Your building
on firm foundations

 **neil**
FOUNDATIONS SYSTEMS

Neil Foundations Systems Ltd

Stake Works Invincible Road Farnborough

Hampshire GU14 7QT

Tel: 01252 550222 Fax: 01252 550223

piling@neilfoundations.co.uk www.neilfoundations.co.uk



INVESTOR IN PEOPLE

